

KD-Validated Anti-Cathepsin B Rabbit Monoclonal Antibody
Rabbit monoclonal antibody
Catalog # AGI2398**Specification****KD-Validated Anti-Cathepsin B Rabbit Monoclonal Antibody - Product Information**

Application	WB, ICC
Primary Accession	P07858
Reactivity	Human
Clonality	Monoclonal
Isotype	Rabbit IgG
Calculated MW	Predicted, 38 kDa , observed, 38 kDa
Gene Name	CTSB
Aliases	CTSB; Cathepsin B; APP Secretase; Cathepsin B1; EC 3.4.22.1; APPS; CPSB; Keratolytic Winter Erythema (Oudtshoorn Skin Disease); Epididymis Secretory Sperm Binding Protein; Amyloid Precursor Protein Secretase; Cysteine Protease; EC 3.4.22; RECEUP; KWE
Immunogen	A synthesized peptide derived from human Cathepsin B

KD-Validated Anti-Cathepsin B Rabbit Monoclonal Antibody - Additional Information

Gene ID	1508
Other Names	
Cathepsin B, 3.4.22.1, APP secretase, APPS, Cathepsin B1, Cathepsin B light chain, Cathepsin B heavy chain, CTSB, CPSB	

KD-Validated Anti-Cathepsin B Rabbit Monoclonal Antibody - Protein Information**Name** CTSB**Synonyms** CPSB**Function**

Thiol protease which is believed to participate in intracellular degradation and turnover of proteins (PubMed:12220505). Cleaves matrix extracellular phosphoglycoprotein MEPE (PubMed:12220505). Involved in the solubilization of cross-linked TG/thyroglobulin in the thyroid follicle lumen (By similarity). Has also been implicated in tumor invasion and metastasis (PubMed:3972105).

Cellular Location

Lysosome. Melanosome. Secreted, extracellular space {ECO:0000250|UniProtKB:A1E295}. Apical cell membrane {ECO:0000250|UniProtKB:P10605}; Peripheral membrane protein

{ECO:0000250|UniProtKB:P10605}; Extracellular side {ECO:0000250|UniProtKB:P10605}.
Note=Identified by mass spectrometry in melanosome fractions from stage I to stage IV
(PubMed:17081065) Localizes to the lumen of thyroid follicles and to the apical membrane of
thyroid epithelial cells (By similarity) {ECO:0000250|UniProtKB:P10605,
ECO:0000269|PubMed:17081065}

Tissue Location

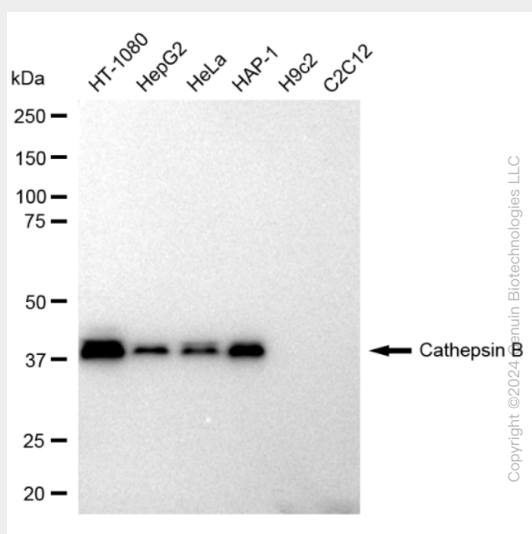
Expressed in the stratum spinosum of the epidermis. Weak expression is detected in the stratum granulosum

KD-Validated Anti-Cathepsin B Rabbit Monoclonal Antibody - Protocols

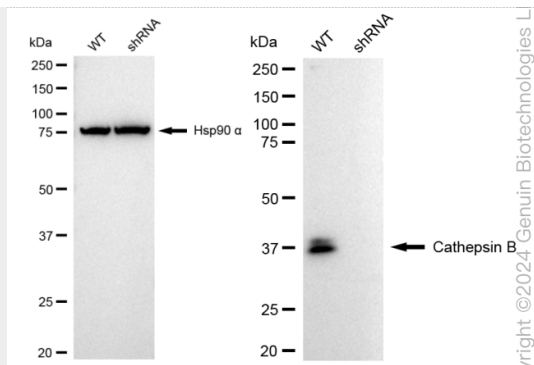
Provided below are standard protocols that you may find useful for product applications.

- [Western Blot](#)
- [Blocking Peptides](#)
- [Dot Blot](#)
- [Immunohistochemistry](#)
- [Immunofluorescence](#)
- [Immunoprecipitation](#)
- [Flow Cytometry](#)
- [Cell Culture](#)

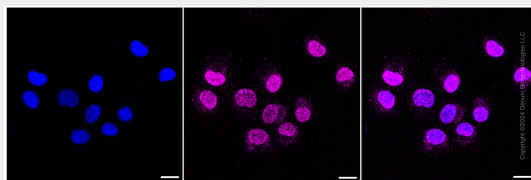
KD-Validated Anti-Cathepsin B Rabbit Monoclonal Antibody - Images



Western blotting analysis using anti-Cathepsin B antibody (Cat#AGI2398). Total cell lysates (30 µg) from various cell lines were loaded and separated by SDS-PAGE. The blot was incubated with anti-Cathepsin B antibody (Cat#AGI2398, 1:5,000) and HRP-conjugated goat anti-rabbit secondary antibody respectively.



Western blotting analysis using anti-Cathepsin B antibody (Cat#AGI2398). Cathepsin B expression in wild type (WT) and Cathepsin B shRNA knockdown (KD) HeLa cells with 30 µg of total cell lysates. Hsp90 α serves as a loading control. The blot was incubated with anti-Cathepsin B antibody (Cat#AGI2398, 1:5,000) and HRP-conjugated goat anti-rabbit secondary antibody respectively.



Immunocytochemical staining of HepG2 cells with Cathepsin B antibody (Cat#AGI2398, 1:1,000). Nuclei were stained blue with DAPI; Cathepsin B was stained magenta with Alexa Fluor® 647. Images were taken using Leica stellaris 5. Protein abundance based on laser Intensity and smart gain: Low. Scale bar: 20 µm.